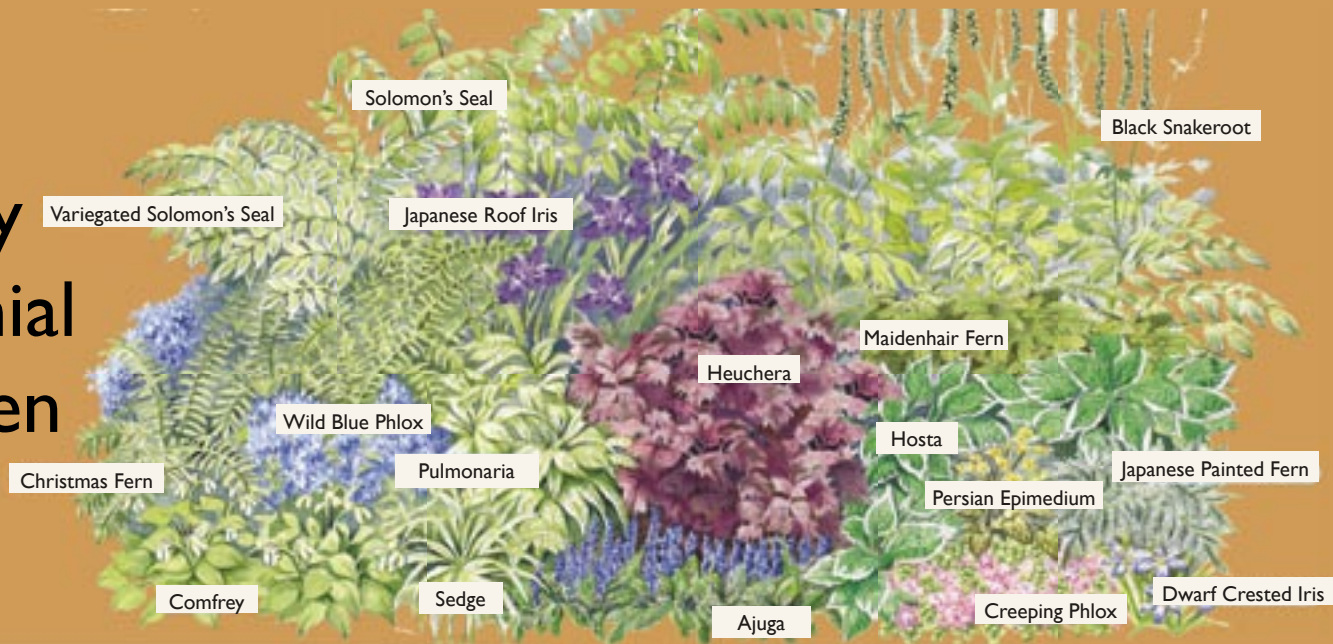


A Shady Perennial Garden



Reprinted from: PERENNIAL COMBINATIONS by C. Colston Burrell. Copyright © 1999 by C. Colston Burrell. Permission granted by Rodale, Inc., Emmaus, PA 18098.

Idaho's Noxious Weeds

by Dan Safford, ISDA Noxious Weed Specialist

What is a Noxious Weed? Noxious weeds are plants declared noxious because they have the potential to cause injury to public health, crops, livestock, and land. Currently there are 57 noxious weeds in Idaho. You may see them at www.agri.idaho.gov. It is the duty and responsibility (including the cost to control) of all landowners to control noxious weeds on their land.

Noxious weeds gain a competitive advantage because they have no natural enemies (i.e. insects, pathogens, and fungi). Without these natural enemies to keep them in check, noxious weeds flourish.

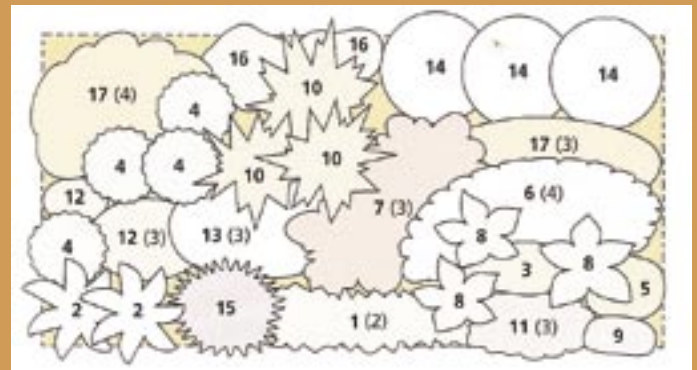
In addition to not having natural enemies, noxious weeds have other characteristics that allow them to out-compete native plants; such as: early maturation (common crupina); abundant seed production (Rush skeletonweed); biological toxins (Poison hemlock); prickles, spines, or thorns (Houndstongue and Puncturevine); easily occupy disturbed sites (Musk thistle); and long lived seeds (Field bindweed, 50 years).

Noxious weeds impact native plants, animals, and natural ecosystems by reducing crop production and forage (Yellow starthistle); altering ecosystem processes (Salt cedar); impacting recreation (Eurasian watermilfoil); and cause the loss of wildlife habitat (Spotted knapweed).

Aquatic noxious weeds have recently burst into Idaho. There are five aquatic plants on the Idaho noxious weed list and all were introduced to the state through the aquarium trade. Eurasian watermilfoil is an example of an aquatic noxious weed that has invaded Idaho waters with dense mats of vegetation.

If you have questions about noxious weeds or need a suspected noxious weed identified, always call your County Weed Superintendent.

Garden Plan:



Plant List for the Shady Perennial Garden:

1. Ajuga (*Ajuga reptans*)
2. Comfrey (*Symphytum grandiflorum*)
3. 'Sulphureum' Persian epimedium (*Epimedium x versicolor* 'Sulphureum')
4. Christmas fern (*Polystichum acrostichoides*)
5. Japanese painted fern (*Athyrium niponicum* 'Pictum')
6. Maidenhair fern (*Adiantum pedatum*)
7. 'Palace Purple' heuchera (*Heuchera* 'Palace Purple')
8. 'Francee' hosta (*Hosta* 'Francee')
9. Dwarf crested iris (*Iris cristata*)
10. Japanese roof iris (*Iris tectorum*)
11. Creeping phlox (*Phlox stolonifera*)
12. Wild blue phlox (*Phlox divaricata*)
13. 'Roy Davidson' pulmonaira (*Pulmonaria* 'Roy Davidson')
14. Black snakeroot (*Cimicifuga racemosa*)
15. Creeping variegated broad-leaved sedge (*Carex siderostica* 'Variegata')
16. Solomon's seal (*Polygonatum biflorum*)
17. Variegated Solomon's seal (*Polygonatum odoratum* 'Variegatum')

